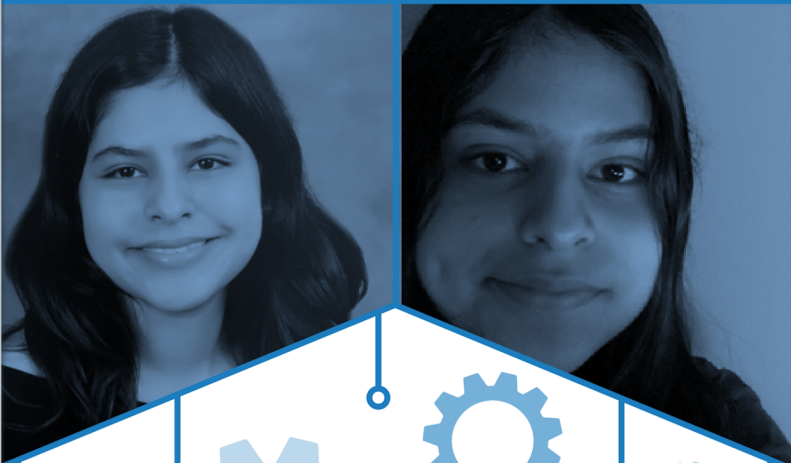



**STEM AMBASSADOR
SPOTLIGHT**

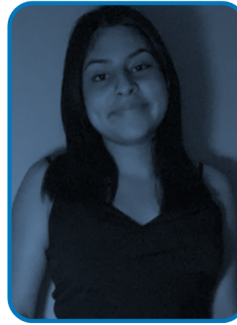


Edith Razo
Biomedical Engineering



How did you select your college major? What was the biggest influence?

I always had a passion for mathematics and biology. Biomedical engineering allows me to mesh my interest for both mathematics and sciences. I enjoy tackling complex problems and learning more about the world around me. I hope to improve healthcare for all and make a positive impact.



What advice would you share with K-12 students who are considering your major?

If you have a passion for engineering and sciences, follow that passion because it will always be there for you during challenging times. Biomedical engineering offers the opportunity to develop tools that can improve the quality of healthcare and save lives. The hard work is rewarding.

What high school elective course do you wish you had taken to better prepare you for college?

I wish I had taken a physics course that would have provided a strong foundation for the coursework I have now.

When you aren't in class or studying, what can you be found doing in your spare time?

I enjoy the outdoors a lot; I bike, take care of my garden, and hike. I enjoy learning new things and writing.

What motivates you to get out of bed and go to class every day?

I hope to advance healthcare for underrepresented communities and that my work makes a positive impact on many lives. I enjoy learning and growing as a person every day.

How do you or your major make a positive impact on society/our community?

Biomedical engineers work towards improving healthcare outcomes and the well-being of patients. They develop medical devices, implants, and therapies that contribute to advancements in medicine.

What do you look forward to the most while being a STEM Ambassador?

I hope to help students discover their passions and find ways for them to achieve their goals. I also hope to inspire more students to pursue a STEM career.

